

DUCKS
UNLIMITED



Spring Lake Bottoms

411 acres

2001 Acquisition

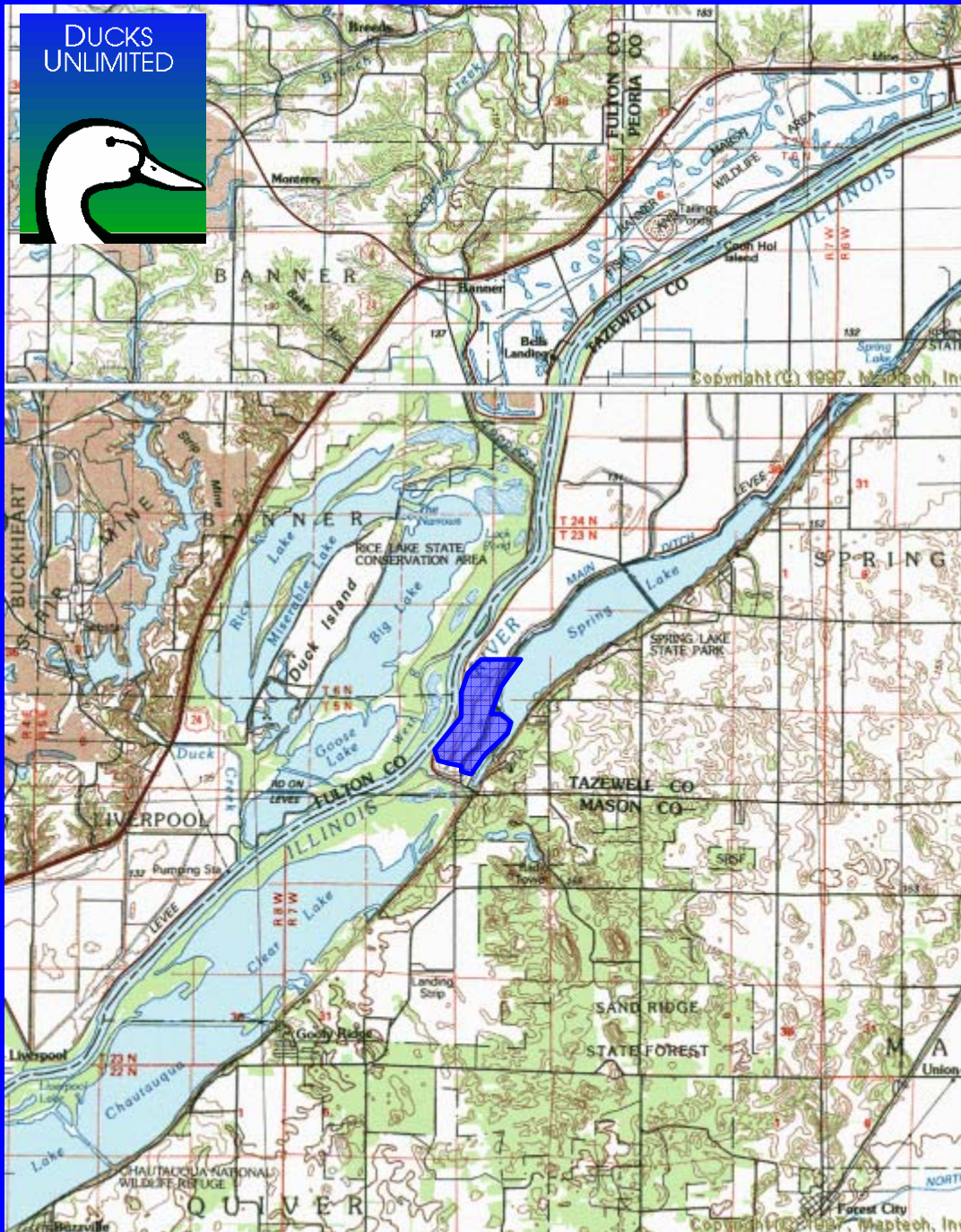
\$925,000 WRP/NAWCA

2004/2005 Restoration

\$775,000 WRP/ICF/DU



DUCKS
UNLIMITED



Spring Lake Bottoms

Tazewell County, IL

Illinois River (RM 134-135.5)

Spring Lake SFWA



DUCKS
UNLIMITED

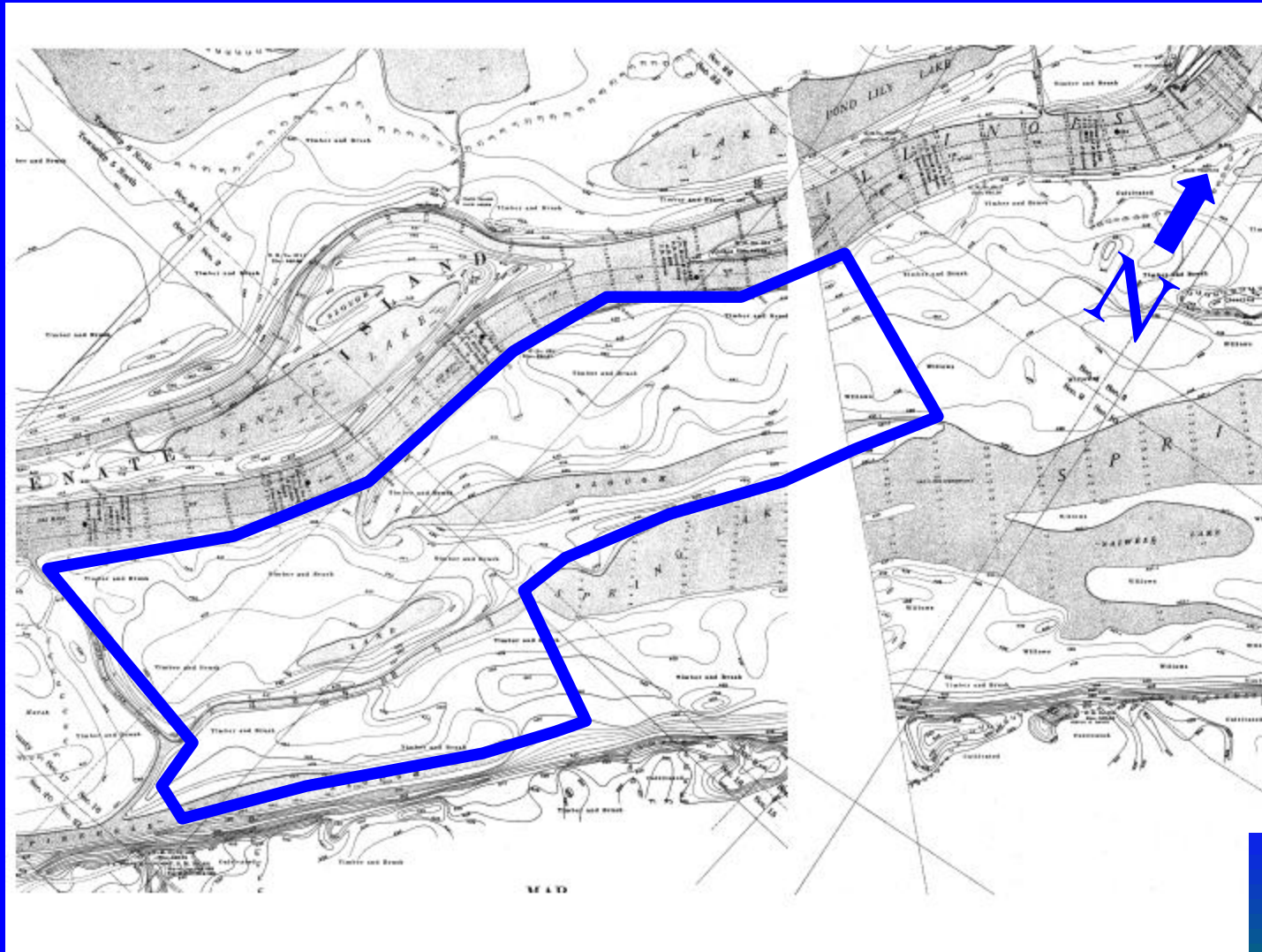


Spring Lake Bottoms Objectives:

- Restore Diverse Wetland Habitats
- Demonstrate Innovative Techniques
- Provide Public Recreation/Education

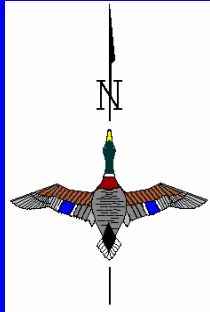


Spring Lake Bottoms 1900



DUCKS
UNLIMITED





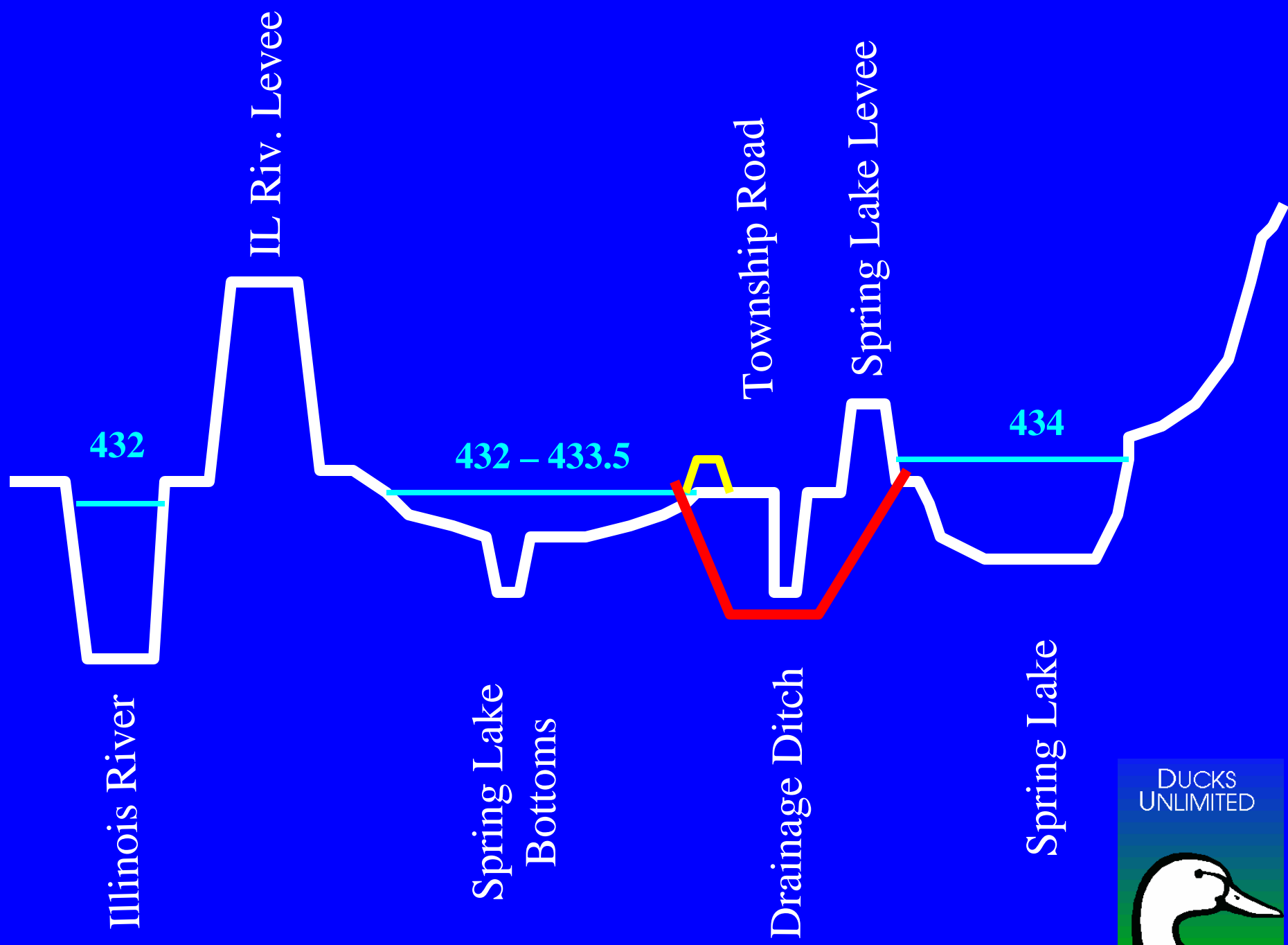
Spring Lake Bottoms--2000

Illinois River Levee
Drainage District Ditch
Township Road
Spring Lake Levee

DUCK
UNLIMITED







DUCKS
UNLIMITED

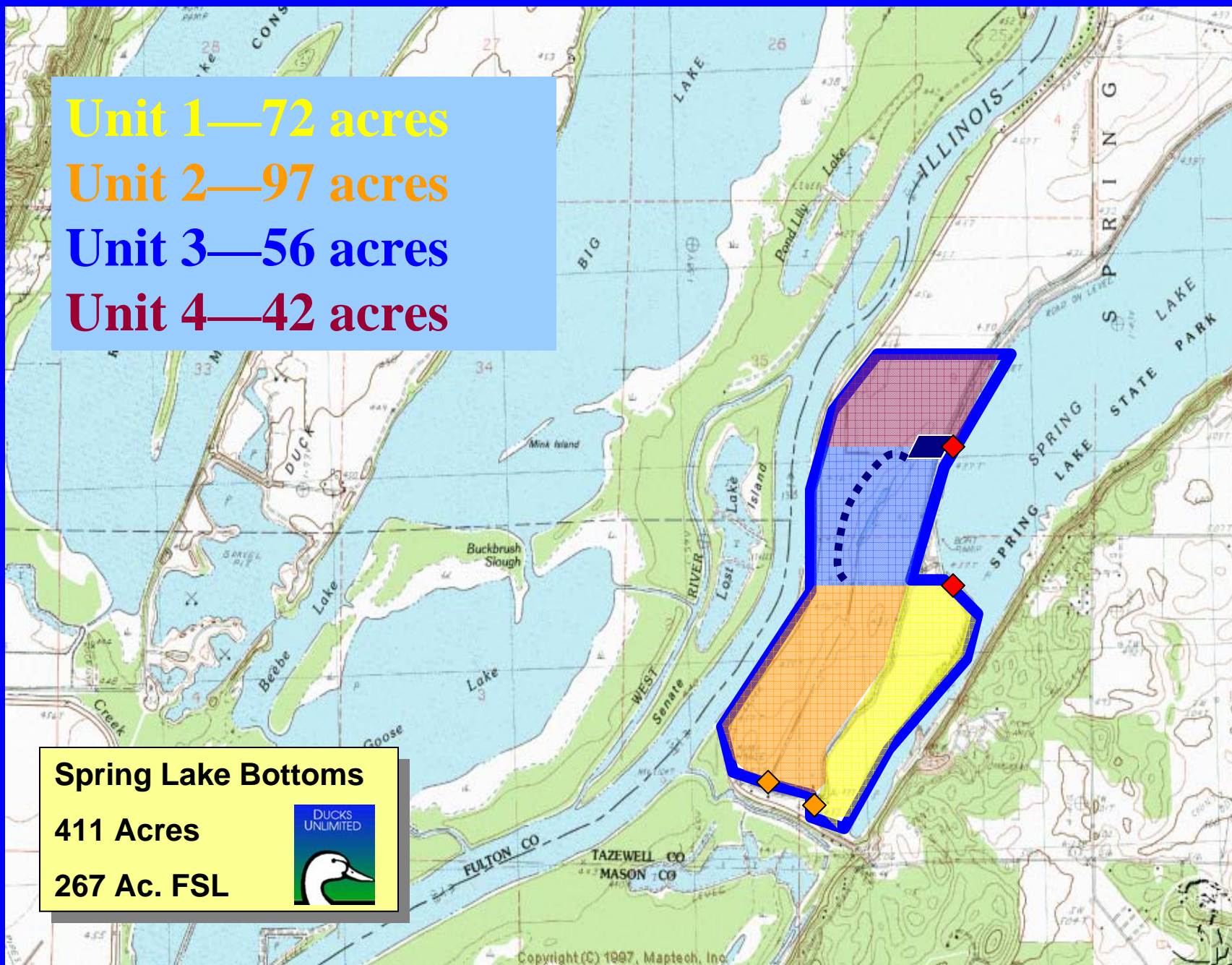


Unit 1—72 acres
Unit 2—97 acres
Unit 3—56 acres
Unit 4—42 acres

Spring Lake Bottoms

411 Acres

267 Ac. FSL

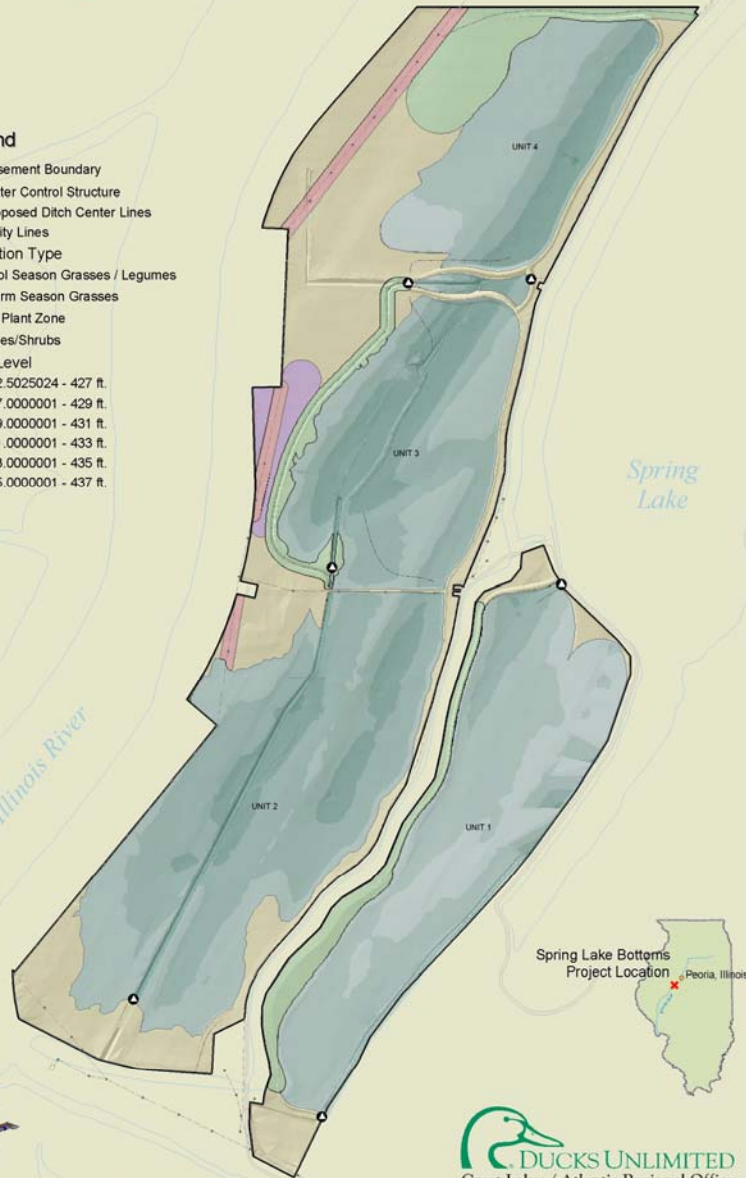




Spring Lake Bottoms, IL

Legend

- Easement Boundary
- Water Control Structure
- Proposed Ditch Center Lines
- Utility Lines
- Vegetation Type
 - Cool Season Grasses / Legumes
 - Warm Season Grasses
 - No Plant Zone
 - Trees/Shrubs
- Water Level
 - 422.5025024 - 427 ft.
 - 427.0000001 - 429 ft.
 - 429.0000001 - 431 ft.
 - 431.0000001 - 433 ft.
 - 433.0000001 - 435 ft.
 - 435.0000001 - 437 ft.



DUCKS UNLIMITED
Great Lakes / Atlantic Regional Office
331 Melby Drive, Suite 4 • Ann Arbor, MI 48103
734.823.2000 www.ducks.org

Wetland Types:

Bottomland Forest	22.0 ac.
Flooded Forest	31.9 ac.
Wet Meadow	4.4 ac.
Moist Soil	194.4 ac.
Floating/Submerg.	43.8 ac.





DUCKS
UNLIMITED

